



The Reach

16 Thames Reach | Thamesmead | London | SE28 0FR

Guide price £270,000

idyll.

Key features

- Modern Apartment
- Underfloor Heating
- Balcony & Garden
- Allocated Parking
- Riverside Access
- Good schools, nurseries and local shops at doorstep
- Close to Elizabeth Line, National Rail, DLR
- Easy connections to Canary Wharf & London City Airport
- Potential Thamesmead DLR extension
- Ideal for first-time buyers and investors

Description

Discover Modern Living in West Thamesmead; Stylish 1-Bedroom apartment with Parking, Balcony & Garden. Prime Connectivity & Investment Potential.

Perfectly situated on the first floor, this charming 1-bedroom, 1-bathroom apartment offers both comfort and convenience in West Thamesmead. Thoughtfully designed for modern living, the home features an open-plan kitchen with integrated appliances and a south-facing balcony that fills the space with natural light year-round. The sleek, fully-tiled bathroom suite adds to its charm, including its utility/storage and underfloor heating throughout the home.

With a bonus of allocated parking space, bike storage and a communal garden, this apartment is ready for immediate comfort and ease of living.

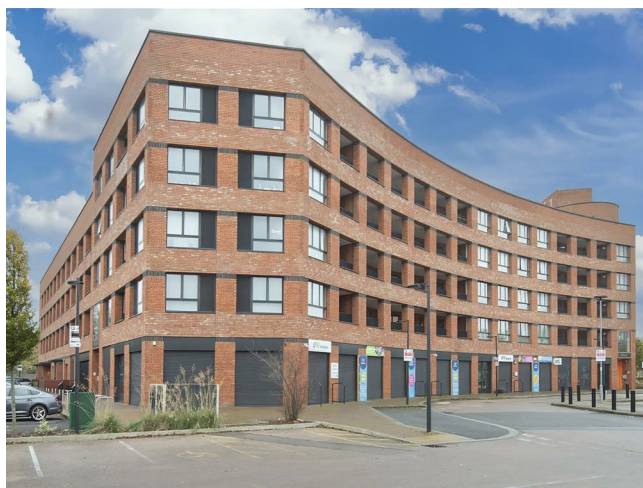
Just a short stroll to the Thames riverside path and surrounded by lush parks and lakes, the property offers a tranquil environment yet sits close to the amenities that matter most. Local shops, good schools, nurseries, and everyday essentials are just steps away, making it an ideal choice for convenience and connectivity.

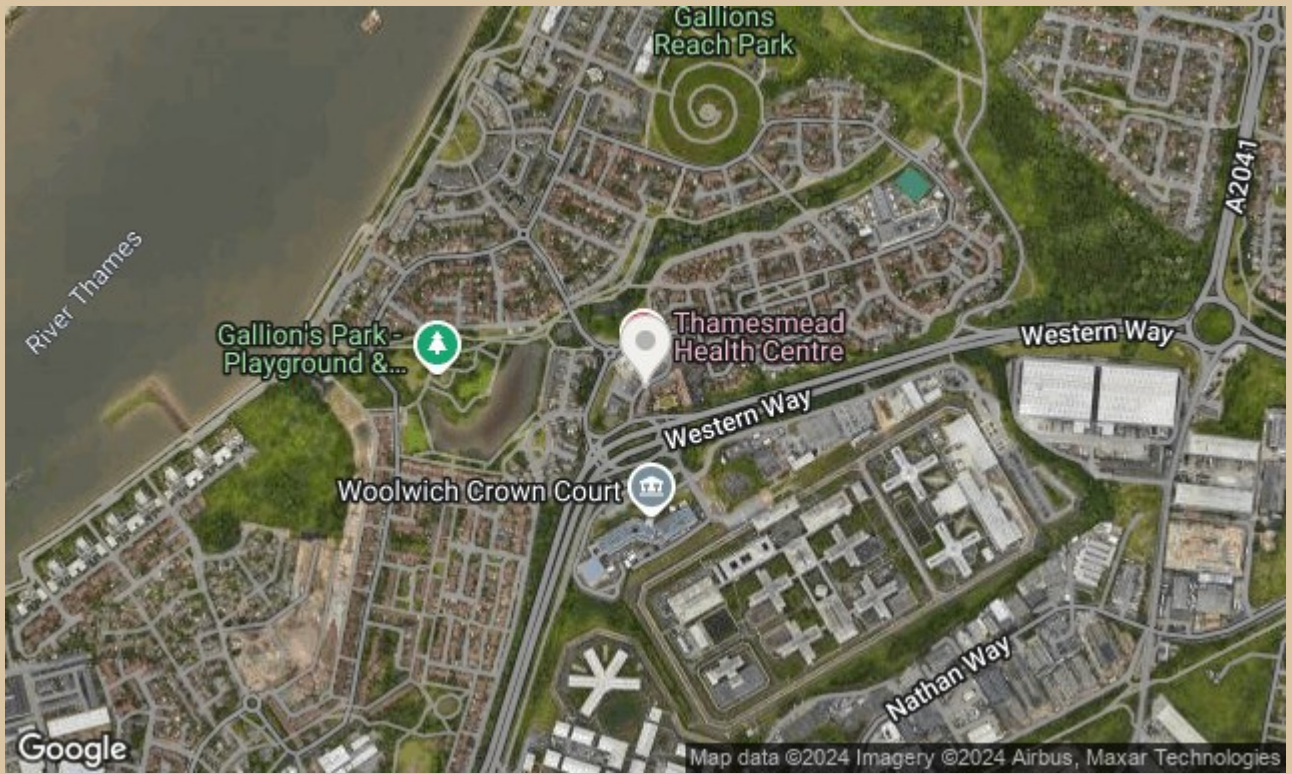
Excellent transport links—including quick bus or walking routes to Woolwich for Elizabeth Line, National Rail, DLR, Woolwich Ferry, and Uber/Thames Clipper Boat services—commuting to Canary Wharf, City Airport, and Central London is seamless.

Thamesmead is a unique area situated in the London Boroughs of Greenwich, known for its distinctive architecture and waterfront location along the River Thames. Thamesmead's rapid growth and exciting developments, including a potential DLR extension make this apartment more than just a home but a future-proof investment in one of London's emerging riverside neighbourhoods.

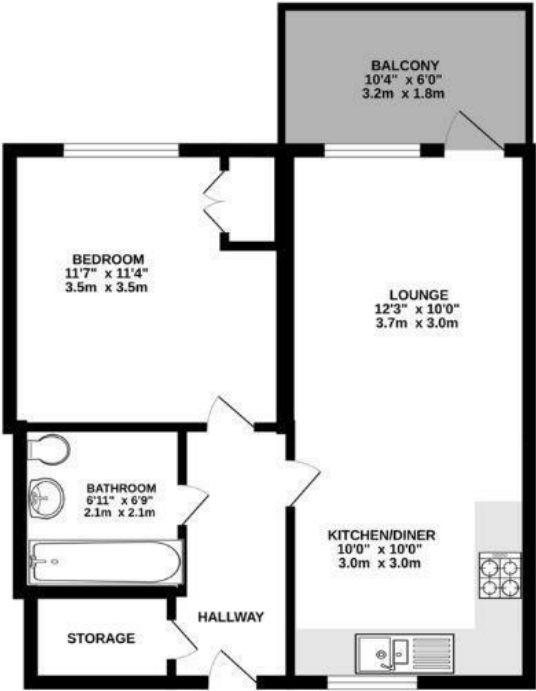
Directions

Thamesmead is a unique area in the London Borough of Greenwich, known for its distinctive architecture and waterfront location along the River Thames. Commuting to Canary Wharf, City Airport, and Central London is seamless with excellent transport links—including quick bus or walking routes to Woolwich for Elizabeth Line, National Rail, DLR, Woolwich Ferry, and Uber/Thames Clipper Boat services.



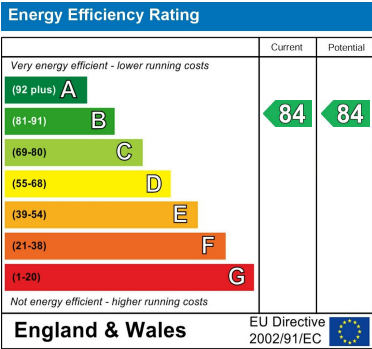


Floor plans



1 BEDROOM FLAT
FLOOR AREA 538 sq.ft (50 sqm) approx.

This floor plan is for illustrative purposes only. It is not drawn to scale. Any measurements, floor areas (including any total floor area), openings and orientation are approximate. No details are guaranteed, they cannot be relied upon for any purpose and they do not form part of any agreement. No liability is taken for any error, omission or misstatement. A party must rely upon its own inspection(s). Powered by Floorfy.



idyll.

Iris Court, 16 Thames Reach
London
SE28 0FR
0203 576 5089
sales@theidyll.co.uk
theidyll.co.uk